



# Support of Wildlife in Suburban and Rural Properties



Norman Jones  
Lost Pines Garden Club VP  
[Norm.jones@customtechnology.com](mailto:Norm.jones@customtechnology.com)  
(512) 731-6050  
March 14, 2023



# Summary

- **Provide an overview of practical measures to support wildlife in suburban and rural properties**
- Gardeners and residents have an opportunity to help support:
  - Wildlife
  - Conservation, preservation, and natural beauty of land
  - Rural property owners have an additional opportunity to preserve farms/ranches to benefit:
    - Themselves including reduced property taxes by “Texas Ag 1-d-1 Wildlife”
    - Our environment and our community
- Provide an overview of practical projects to support wildlife and conservation such as “birdhouses”
- Provide an overview of projects to support wildlife in Bastrop and Smithville parks and churches
- Provide brief overview of “Texas Ag 1-d-1” benefits and steps

This project supports wildlife and conservation, is not complicated, and could be accomplished by most any person or organization



# Birdhouse Purposes

- Enhance opportunity for birds as “God’s creatures” to thrive and raise their families
- Provide protection from weather, predators, etc. for mothers and nestlings



“Support God’s creatures”



Examples of natural bird nests in bushes:

Nests susceptible to severe weather (wind, rain),  
predators (e.g., squirrels, racoons, snakes, fire ants, etc.)



Wood duck house with predator control  
(pole shorter than planned)



# Planned Bird Houses



Native songbird (e.g., Bluebird), Wood Duck, Bat houses, Owl

- Install on poles (e.g., 8' T posts)
- Install guards for predators such as squirrels, racoons, snakes
- Check and clean every few months
- Some weathering is expected but plan to replace in approximately 4 years

Wood Duck house  
approximately 3 years old and  
still functional



# Texas Bluebird Society Design and Wood Duck houses



- Built by SturdiBilt
- Engraving using CNC plasma Cutter by DV Laserworks
- Use nail or wire in hole to prevent access door from opening accidentally



# Wood Duck House

[www.ducks.org/conservation/waterfowl-research-science/build-a-wood-duck-box](http://www.ducks.org/conservation/waterfowl-research-science/build-a-wood-duck-box)

## Build a Wood Duck Box

These wooden structures help boost local wood duck populations, and may also be used by other cavity nesting birds.



A Home for Wood Ducks and Others





# Example of Duck House on T post pole with Predator Guard and sign

- Illustrates configuration with Duck house, Bluebird house would be similar
- This is mounted on a short T post
  - T post is normally 8' long in ranch, 10' on public parks
- Owl and bat houses mounted high on poles



# Predator Control for Bird Houses

[www.thespruce.com/protecting-bird-houses-from-predators-386633](http://www.thespruce.com/protecting-bird-houses-from-predators-386633)

- Protect nesting birds from predators such as racoons, squirrels, or snakes
- Mounting bird house on pole (e.g., "T post") is simple and effective
  - Predators can readily climb trees
  - Flexible placement of bird house location
- Snake netting deters rat snakes



- 4"x10' solid pipe
- Lowes 187408 \$13.61 for 10'
- Stovepipe predator guard for mounting pole
- Cut into five 2' sections



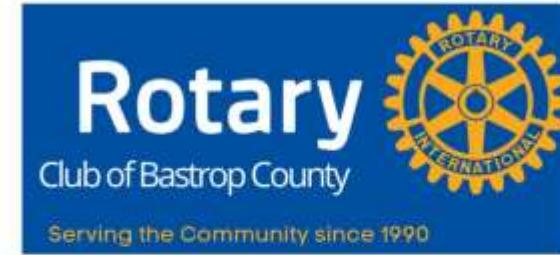
- Picture with 8' T post and "stovepipe[e guard
- 10' T post is recommended for public spaces to minimize vandalism and increase comfort for birds




# Sign for Bird House Posts

8"x10" sign

- Sign for T posts (or poles)
  - Shows aspects
  - Mount on T posts
  - 8"x10"
  - PVC/aluminum sign on T post (or pole)
- Front of bird house is CNC laser engraved with color with Rotary logo

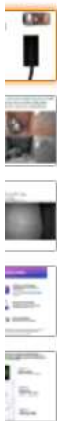


# Nest Camera

 Last purchased Feb 18, 2023  
[View order](#)

Use for observing nestlings and mothers without disturbance

[Set ren](#)




WIWACAM WiFi Bird Box Camera, 4K HD WLAN, Live Video to Phone, Easy Installation to Most of Bird Box Bird House Birdhouse Feeders Nesting, for Robins, Wrens, Tree Swallows, with Night Mode, Recording

Brand: WIWACAM

★★★★☆ 3 ratings | 3 answered questions

Price: \$59.90  One-Day

[FREE Returns](#)

**Coupon:**  15% coupon applied to one item per order at checkout  
[Terms](#)

Earn 5% **Back** on this purchase when you pay with your **Amazon Business Prime American Express Card**.

Eligible Prime membership required. Terms and cap apply.

Brand	WIWACAM
Special Feature	Night Vision, Motion Sensor
Connectivity Protocol	Wi-Fi
Controller Type	Android
Mounting Type	Wall Mount



# Examples of Bat and Bird House Installation



- Jan 8, 2023 at Kovar Ponds Ranch
- Bat house on electric power pole
- Bird house with stovepipe predator guard and snake netting
- Also installed NWF "Certified Wildlife Habitat" sign



# National Wildlife Foundation

- It is possible to have areas in Smithville apply for and obtain NWF recognition as “Certified Wildlife Habitat”
- Riverbend Parks already “Certified Wildlife Habitat”
- [Garden for Wildlife \(nwf.org\)](http://www.nwf.org/CertifiedWildlifeHabitat)  
[www.nwf.org/CertifiedWildlifeHabitat](http://www.nwf.org/CertifiedWildlifeHabitat)



**CERTIFIED WILDLIFE HABITAT**

### Certify Your Habitat to Help Wildlife!

Wildlife habitat gardens are a haven for local birds, butterflies, and other wildlife. Tell us how your yard or garden provides habitat and the National Wildlife Federation will recognize it as a Certified Wildlife Habitat®.

Once certified, you can share your accomplishment and commitment to helping wildlife with your whole neighborhood by purchasing and posting an exclusive Certified Wildlife Habitat® sign.



The secure \$20 application processing fee and sign purchase directly support the National Wildlife Federation's programs to protect wildlife and its habitat.

- The **NWF program** certifies wildlife-friendly land for homeowners, businesses, schools, universities, places of worship, parks, and community-based organizations as community wildlife habitats
- Example locations:
  - Smithville city property such as Riverbend Park, Railroad museum park, etc.
  - Private property
    - Churches in Smithville



# Bastrop and Smithville Parks, Gardens, etc. as Certified Wildlife Habitat

[www.nwf.org/CertifiedWildlifeHabitat](http://www.nwf.org/CertifiedWildlifeHabitat)

The **NWF program** certifies wildlife-friendly land for homeowners, businesses, schools, universities, places of worship, parks, and community-based organizations as community wildlife habitats.





# Wildlife Support Projects Including Bird Houses for Bastrop and Smithville

*Rotary Club of Bastrop County project but could be replicated by other organizations!*



Norman Jones  
[Norm.jones@customtechnology.com](mailto:Norm.jones@customtechnology.com)  
(512) 731-6050  
March 2023





# Summary of Bird Houses for Cities of Smithville and Bastrop

- A public service project for public spaces such as city parks or City Hall
  - Support of protecting the environment and education
- Provide houses for birds native to (or migrating through) our Central Texas area
  - Support “our feathered friends”
  - Help maintain a natural environment in rural or suburban areas
  - Provide supplemental shelter for wildlife (e.g., native birds) while discouraging predators
  - Houses are available for songbirds (Texas Bluebirds, etc.), ducks, or bats, and owls
- Install at locations including Fisherman's Park in Bastrop and Riverbend Park in Smithville



# Extension of Bird Houses for Cities of Smithville and Bastrop



- The Rotary Club of Bastrop County is doing this as a public service project for the Cities of Bastrop and Smithville
- A related project is for “Prayer Gardens” at churches (e.g., FUMC Smithville)
- These measures actively support wildlife and our environment
  - Are not complicated or expensive
  - Other organizations such as Lost Pines Garden Club, Master Naturalist/Gardeners, Lions Club, Audubon Society, church, etc. could readily replicate this for the benefit of people and our natural environment



# Possible Considerations and Locations for Bird Houses in Bastrop and Smithville

- Should be visible to the public (with signage) but not in unprotected area with excessive people, vehicle, or pet area to disturb nesting birds
- Located on City owned property
- Fisherman's Park in Bastrop
- Smithville
  - Railroad museum/Smithville Chamber: 1-2 Native songbird (e.g., Bluebird)
  - Riverbend Park:
    - 2+ Native songbird in open areas but near trees
    - Wood Duck on banks of the Colorado River
    - Bat and owl house
- Future: At garden area near highways 71 and 95 (TX DOT Green area)
- Schools, other, Serenity Star Ranch

# Proposed Bird Houses Support Bastrop “Bird City Certification”

[Parks](#)[Hunting](#)[Fishing](#)[Boating](#)[Game Warden](#)[Activities](#)[Wildlife](#)[Land](#)[Water](#)[Media](#)[Calendar](#)[Regulations](#)[Education](#)[Volunteer](#)[More...](#)

Bird City Texas

[About](#)[Resources ▾](#)[FAQ](#)[How to Apply](#)[Contact Us](#)

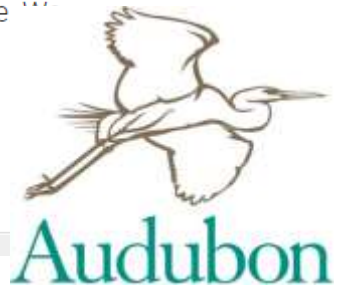
## Bastrop: Bird City Texas Certified Community

Learn more about the excellent work being done in Bastrop to involve their community, improve habitat, and create safer spaces for birds. Below you will find some details about Bastrop as well as a few examples of the local bird-friendly initiatives they have implemented that led to their Bird City Texas official certification. This list is not exhaustive but hopefully helps give insight on what local communities are doing to support birds and the spaces where they live. We hope these examples help you discover ways your community can work to protect birds and their habitat where you live.

### Details

Bastrop Details

TEXAS  
PARKS &  
WILDLIFE





# Approach

- City of Smithville decides on projects including locations of birdhouses (e.g., six)
  - Example: Riverbend park, Railroad/Smithville Chamber area
  - Augment Rotary members with “birders” such as Audubon Society
- Let people know these birdhouses exist and the purpose
- Assess results and next steps
- Rotary Club (ideally with the public) maintains the houses such as checking at least twice a year
- Birdhouses will weather and eventually need replacement for a limited cost and time
- Project in Bastrop

# Additional Considerations

- Support of wildlife is also relevant to the rural character of Smithville and Texas
- Growth and development is happening and can be beneficial
- Support of appropriate growth/development is desirable
- One aspect of that can be an approach for support of Texas Ag based upon “Wildlife/open space” for Texas Ag 1-d-1
  - One example is our Kovar Ponds Ranch south of Smithville where we (and our neighbors) support wildlife
  - We are in process of installing many native bird, Wood Duck, owl, and bat houses with predator guards as part of our family love of wildlife/natural environment/conservation, and Texas Ag 1-d-1



# Texas Ag 1-d-1: Wildlife

- A viable approach for conservation and preservation of large rural ranches/farms
- Maintain Texas Ag 1-d-1 valuation for low property taxes on land with limited work and expense
- Traditional Texas Ag (1-d) such as cattle can degrade properties and involve significant work, expense, and risks
- Property Texas benefits (land but not houses) of Texas Ag 1-d and 1-d-1 are the same
- Some info at [Ag-Use Exemption: Fact or Fiction? \(tamu.edu\)](http://tamu.edu)

# TX Ag 1-d-1 (open space/wildlife) Aspects

**Texas Ag 1-d-1 rules require “3 out of 7” measures in an approved and executed plan**

## 1. Supplemental food:

1. Wild bird food (sunflower seeds) in bird feeder on pole
2. Other measures such as food plots, etc. are also being done
3. There will be a nearby traditional deer feeder

## 2. Supplemental water

1. Metal/concrete stock tanks, rainwater collection

## 3. Census (wildlife and predators)

1. Game cameras (2) on pole to record wildlife activities and effectiveness of the system
2. Food and water will attract desirable and undesirable (e.g., feral hogs, raccoons) wildlife.
3. Record data in log books/spreadsheet

# TX Ag 1-d-1 (open space/wildlife) Aspects of Continued

## 4. Predator control

1. Predator baffle (snake, racoon, etc.), and netting at bird houses
2. Other : Fire ant poison, Raccoon traps and feral hog shooting as needed
3. “Tanglefoot” insect barrier for fire ants

## 5. Supplemental shelter

1. Bird house, duck houses, bat houses on snake/squirrel proof mounting pole
2. Nearby are brush piles and woods for wildlife

## 6. Habitat control: improve environment for wildlife

1. Limit cattle, planting of desirable vegetation, invasives control, etc.

## 7. Erosion control



# Birds at “Kovar Ponds Ranch”

Recorded on game camera



62F 17C ) 2020-03-23 10:51:41



80F 27C )

2020-04-18 20:26:14



77F 25C )

2020-03-29 21:11:05



Backup slides on birdhouse construction



# Owl Box House

[www.audubon.org/news/how-build-screech-owl-nest-box](http://www.audubon.org/news/how-build-screech-owl-nest-box)

Plan calls for 1x10 8' cedar or Cyprus

## Activities

### How to Build a Screech-Owl Nest Box

*Step-by-step instructions for building a home that Eastern and Western Screech-Owls will enjoy.*



#### Birds in This Story

Eastern Screech-Owl  
Latin: *Megascops asio*



- An owl house is rather large and heavy
- Best mounted on a high pole (e.g., metal)



# Materials for House for Native birds, Ducks, Bat, and Owls

	A	B	C	D	E	F
1	Materials for Houases for Native Bird, Wood Duck, bat and owl houses)					
2						
3	<b>Item</b>	<b>Cost</b>	<b>Quantity</b>	<b>Total</b>	<b>Source</b>	
4	Bird house: native song bird	\$11.00		\$0.00	SturdiBilt (Paul Beachy)	
5	Bird house: Texas Bluebird Society style	\$18.00	1	\$18.00	SturdiBilt (Paul Beachy)	
6	Wood Duck house	\$18.00		\$0.00	SturdiBilt (Paul Beachy)	
7	Bat house			\$0.00	SturdiBilt (Paul Beachy)	
8	Owl box	\$50.00				
9	T post, 8'	\$8.79	1	\$8.79	Tractor Supply 360914699	
10	Strapping for mounting bird house	\$0.38	2	\$0.77	Lowes 301796 \$9.62 for 25	
11	4" PVC pipe for stovepipe predator guard	\$3.50	1	\$3.50	Lowes 279187 (5 from 10')	
12	Snake netting for predator guard (option	\$1.00				
13	Hardware cloth for predator guard	\$0.75	1	\$0.75	Lowes 492408 \$56 for 25'x:	
14	Miscellaneous	\$1.00	1	\$1.00		
15	CNC laser engraving (optional)	\$3.00	1	\$3.00	DV Laserworks Bastrop	
16	NWF sign	\$12.00	1	\$12.00		
17	Sign for post 8X10 nine per 24x30 sheet	\$2.56	1	\$2.56	<a href="#">Aluminum PVC cord Board (</a>	
18			<b>TOTAL</b>	<b>\$50.37</b>		

# A Good Single Board Songbird Native Birdhouse

- <https://youtu.be/MqDcem62MP0>
- May be optimum design
- Uses single 1x6 cedar fence picket

<https://youtu.be/MqDcem62MP0> (1) How to Make a Birdhouse with 1 board | Simple DIY - Bing video



1.5" hole



# Some More Birdhouses

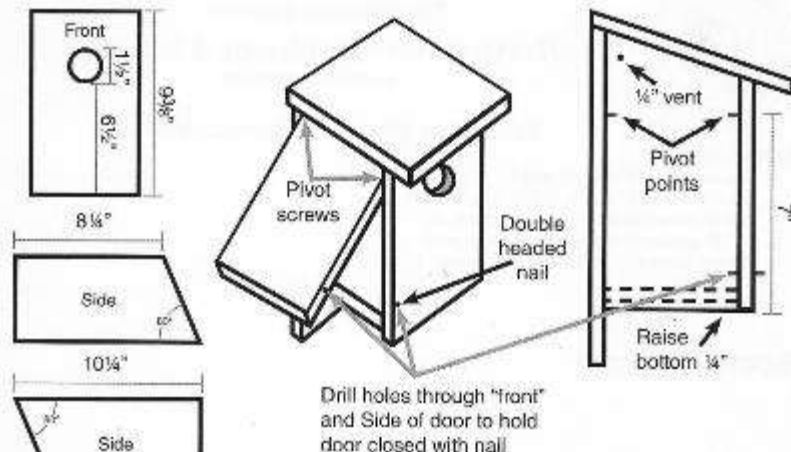




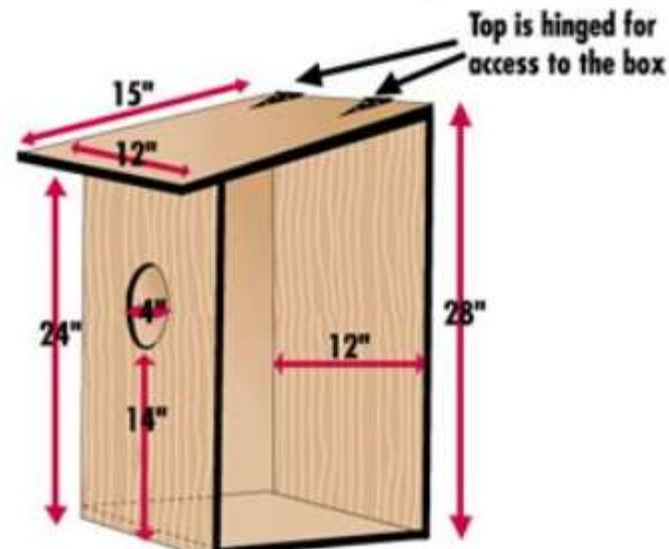
## Other Information on Bird and Bat Houses

- Provides supplemental shelter for birds
- **Bird houses plans** at: [28 Free DIY Birdhouse Plans You Can Build Today \(thespruce.com\)](https://thespruce.com/28-free-diy-birdhouse-plans-you-can-build-today/285484)
- <http://www.nabluebirdsociety.org/PDF/Eastern%20-%20Western%20Bluebird%20Nestbox%20plans.pdf>
- Wood Duck <https://www.ducks.org/conservation/waterfowl-research-science/wood-duck-boxes>
- Bat house plans at: <https://www.nwf.org/en/Garden-for-Wildlife/Cover/Build-a-Bat-House>

### Construction Plan



### Duck Nesting Box Section Drawing



# Texas Bluebird Society Birdhouse

- [www.texasbluebirdsociety.org/BuildingPlans.php](http://www.texasbluebirdsociety.org/BuildingPlans.php)
- Has swing out door
- Made of white pine 1x12 3' (or glued up boards)
- Lowes 1368 \$23.38 for 1x12x8' for \$23.38
  - Makes 2+ houses (2' left over)
- Texas Bluebird Society sells for \$30





# Wood Duck House

[www.ducks.org/conservation/waterfowl-research-science/build-a-wood-duck-box](http://www.ducks.org/conservation/waterfowl-research-science/build-a-wood-duck-box)

## Build a Wood Duck Box

These wooden structures help boost local wood duck populations, and may also be used by other cavity nesting birds.



A Home for Wood Ducks and Others





# Mounting of Bird House

25' can be used with 12 bird houses

## Oatey Galvanized Hanger Strap

Item #301796 Model #335304

Shop Oatey ★★★★★ 24



♥ \$9.62

- Metal Hanger Strap is use
- 28 Gauge Galvanized Ste
- 25 ft in length

− 1 +



Free Store & C  
Ready within 3 h  
Aisle 13 | Bay 24

Delivery to 7861  
Free with \$45 Order  
Get it by Mon, Jan 2

## Franklin Industries ▶ 8 ft. Studded Fence T-Post, 1.25 lb./ft.

★★★★★ 4.7 (156) SKU: 360914699

Reviews

Questions & Answers

Product Details

Specifications



**\$8.79**

As a Neighbor, you are eligible to earn 1 point per dollar on this purchase. [Join Now](#)

**Bulk Discount** buy 400 get 5% off each. [Learn More](#)

The Franklin Industries 8 ft. Studded Fence T-Post features an angled stud that helps hold the fence against the post. With a large anchor plate that provides greater holding power, this 8 ft. studded fence post is finished with enamel for rust-resistance above and below ground. 5 clips are included with the fence T-post for easy, convenient installation.

- Angled stud helps hold the fence against the fence T-post
- Large anchor plate provides greater holding power
- Finished with enamel for rust-resistance above and below the ground
- 5 clips included with the fence T-post for easy installation
- Comes in an 8 ft. size; 1.25 lb. per ft.

[Additional Product Information](#)

T posts are very sturdy and readily installed even on hard ground

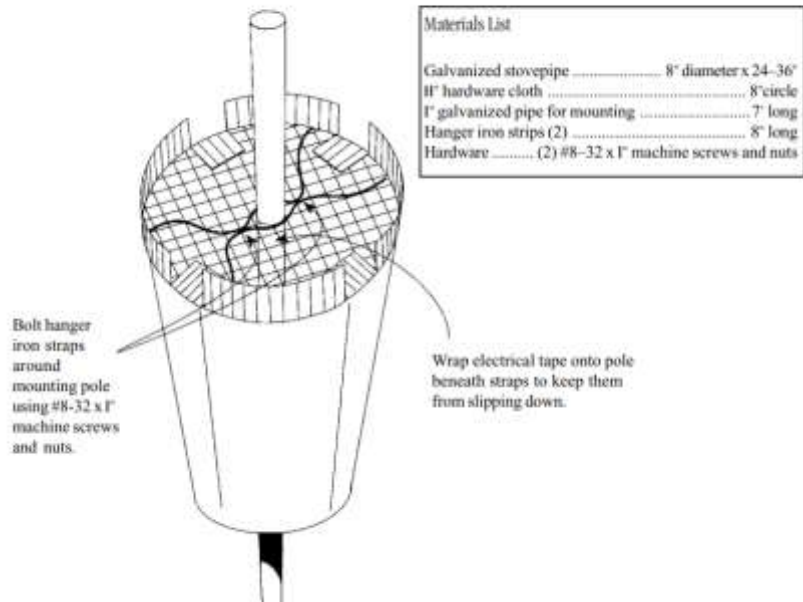
# Stove Pipe Predator Guard

[PREDATOR BAFFLES: Easy, Inexpensive and Effective | Bluebird Conservation](https://bwdmagazine.com/solve/stovepipe-baffle/)

<https://bwdmagazine.com/solve/stovepipe-baffle/> 6"x34"

YouTube <https://bwdmagazine.com/solve/stovepipe-baffle/>

## A Plan for a Stovepipe Predator Baffle



- 8"x24" Lowes 36398 \$9.28
- 6"x60" Lowes 36444 \$15.88
  - Cut into three



14-11 x 14-11 Black Plastic Extruded Mesh Rolled Fencing with Mesh Size 1/2-in X 1/2-in  
Item #300072  
\$7.98





# Summary of Bird Houses for City of Smithville

- A public service project for public spaces such as city parks or City Hall
  - Support of protecting the environment and education
- Provide houses for birds native to or migrating through our portion of Central Texas
  - Support “our feathered friends”
  - Help maintain a natural environment in rural or suburban areas
  - Provide supplemental shelter for wildlife (e.g., native birds) while discouraging predators
  - Houses are available for songbirds (Texas Bluebirds, etc.), ducks, or bats
- Install at locations such as Riverbend Park and Railroad Museum/Chamber area



# Stovepipe Style Predator Baffle Using Plastic Pipe

- Slick, wobbly surface should deter any predator
- 18" long vinyl should be satisfactory
- Top with poultry netting or hardware cloth
- Vinyl: **Optimum:**
  - Minimal dangerous sharp edges
  - Simple to build (miter saw with fine blade)
- Metal stovepipe
  - Traditional
- Can add optional bird netting skirt below the guard as a rat snake catcher in a farm/ranch environment



Cut with power miter saw



# Squirrel, Snake, and Raccoon Proof Bird Feeder and Bird House

- Added part of the “Wildlife Support system”
- Can be used for wild bird feeder or bird house
  - Supplemental shelter and food
- Use combination of metal cone (use plasma cutter) and skirt of made of bird netting to deter and catch snakes
- Make base from scrap steel and 4'x4' cattle panel
- Use ½” electrical conduit for support
  - 7' vertical, 3' horizontal bar
- Pivots down for refilling



Custom artwork and support (Smithville Tiger)

Baffle and netting for predators

Pivot for refilling of bird seed

# Bird Netting for Rat Snakes: form into skirt and fasten with tie wrap to conduit

Lowes

Sta-Green 14-ft x 14-ft Black Plastic Extruded Mesh Rolled Fencing with Mesh Size 1/2-in x 1/2-in

Item #510803 Model #208575

★★★★★ 328



**\$7.98**

- Protects plants, trees
- Reusable for multiple seasons
- Use with landscape fabric

1

+

Free Store 13 Available Aisle 1 | B

Delivery Free with \$ Get it by M

Amazon

awn & Garden › Gardening & Lawn Care › Plant Support Structures › Garden Netting



Share

Aspectek Bird Netting Protective Fencing for Gardens and Crops, 7 X 20 Feet Netting Bird Block Garden Fence

Visit the ASPECTEK Store

★★★★★ 382 ratings | 8 answered questions

Save 48% Lowest price in 30 days

Was: \$15.43 Details

Price: **\$7.99** ✓prime One-Day & FREE Returns

You Save: **\$7.44 (48%)**

Earn 5% Back on this purchase when you pay with your Amazon Business Prime American Express Card.

Eligible Prime membership required. Terms and cap apply.

Brand	ASPECTEK
Material	Polypropylene
Color	7x20 Feet
Item Weight	0.15 Kilograms
Item Dimensions LxWxH	240.16 x 0.39 x 78.74 inches

## About this item

- WIDE COVERAGE AREA: 6.56 x 20 feet (2m x6.1m); Small (0.4 in) mesh holes safe for birds who will not become trapped or entangled.



# Wood Duck House at Kovar Ponds Ranch



August 22, 2022





# Bat House

- It is possible to build this or some version
- [www.thespruce.com/bat-house-plans-4775009](http://www.thespruce.com/bat-house-plans-4775009)
- [diy.dunnlumber.com/projects/how-to-build-a-bat-house?pp=1](http://diy.dunnlumber.com/projects/how-to-build-a-bat-house?pp=1)

Amazon.com Shopping Cart x Amazon.com Shopping Cart x Amazon.com Shopping Cart x Amazon.com Shopping Cart x Amazon.com: MIXXIDEA Bat House x


https://www.amazon.com/gp/product/B08TM7555S/ref=ppx\_yo\_dt\_b\_asin\_title\_o00\_s00?ie=UTF8&psc=1

Pet Supplies Pet Profiles Dogs Cats Fish & Aquatics Small Animals Birds Reptiles Horses Deals & Coupons Pet Care Tips Subscribe & Save

amazon pharmacy The pharmacy that really delivers Learn more

Patio, Lawn & Garden Outdoor Décor Backyard Birding & Wildlife Bats

Last purchased Sep 3, 2022  
Color: wood | View order



11in  
4in  
15in  
6.2in  
9.3in

100% western cedar, naturally resistant to rot and insects  
The grooves provide a safe grip point for the bats  
A large landing pad (8.125" x 11")

Roll over image to zoom in

VIDEO

MIXXIDEA Bat House Bat Box Double Chamber Outdoor House Nursery Bat Shelter Habitat Big bat Box Handcrafted from Cedar Wood - Easy for Bats to Land and Roost - Weather Resistant & Ready to Install

Visit the MIXXIDEA Store  
★★★★★ 128 ratings | 6 answered questions

Was: \$23.99 Details  
Price: \$21.99 ✓prime & FREE Returns  
You Save: \$2.00 (8%)

Earn 5% Back on this purchase when you pay with your Amazon Business Prime American Express Card. Eligible Prime membership required. Terms and cap apply.

Color: wood

Brand: MIXXIDEA  
Material: Wood, Cedar  
Color: Wood  
Style: Box  
Product Dimensions: 9.3"D x 15"W x 4"H

\$21.99  
✓prime & FREE Returns

FREE delivery Tuesday, September 6. Order within 4 hrs 59 mins

Deliver to Custom - Bastrop 78602

Only 15 left in stock - order soon.

Qty: 1

Buying in bulk?

Add to Cart

Secure transaction

Sold by U-T-SKY and Fulfilled by Amazon.

Return policy: Eligible for Return, Refund or Replacement within 30 days of receipt

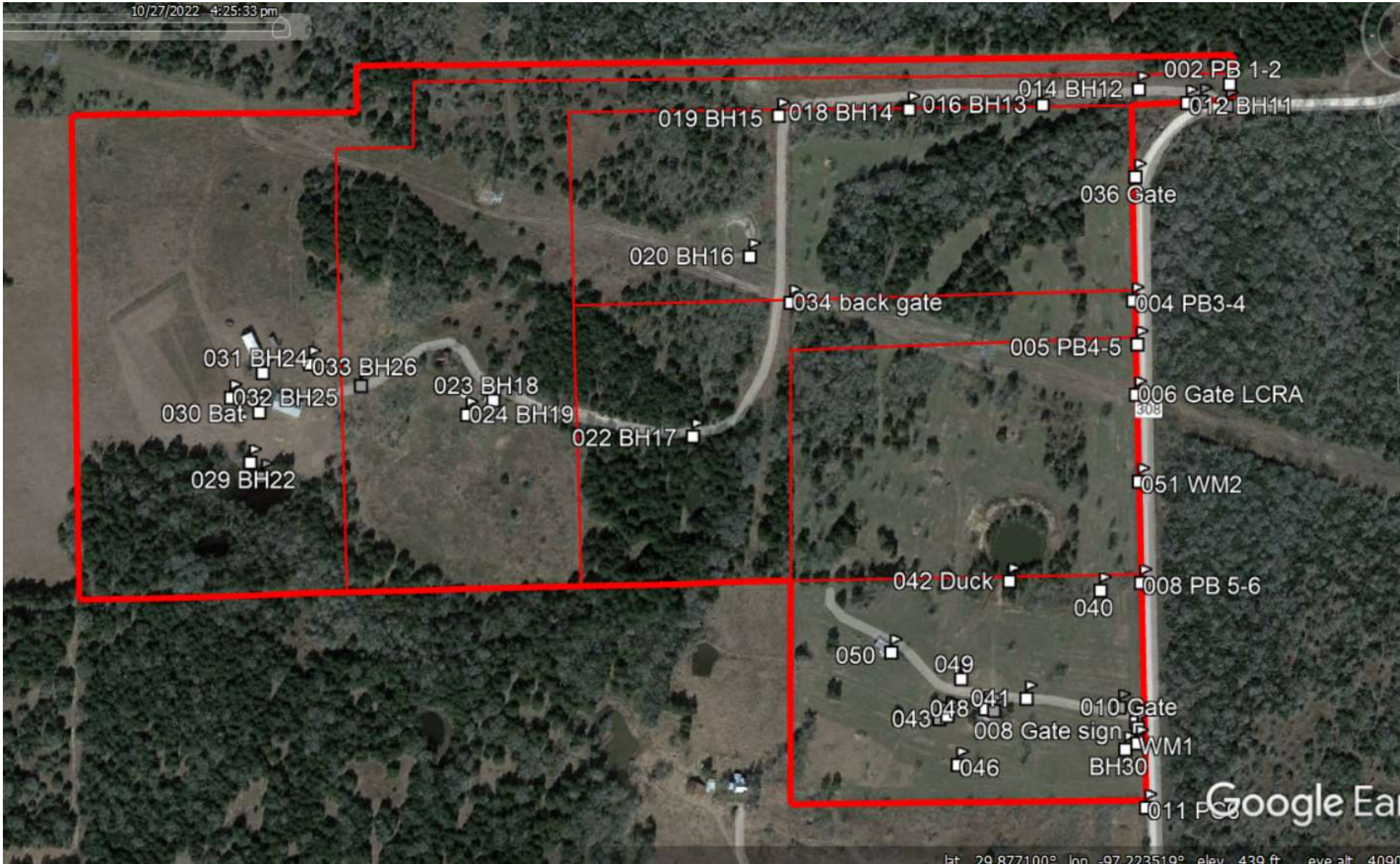
☐ Add a gift receipt for easy returns

# Wildlife Census

- Have record log to document results of effectiveness and use by wildlife of the “Wildlife Support System”
  - Useful for general interest and as one (or 7) steps in Texas Ag 1-d-1
- Examples:
  - Birdhouses: clean semi-annually and note evidence of nesting
  - Bird houses and feeders: note evidence of rat snakes which we caught in netting



# Example of Marking Locations of Native Bird, Wood Duck, and Bat Houses



# Game Camera for Census

t purchased Feb 18, 2020

: 14 Megapixel | [View order](#)



Share

## Wildgame Innovations Terra Extreme Megapixel IR Trail Camera

[Visit the Wildgame Innovations Store](#)

★★★★★ 2,076 ratings | 87 answered questions

Price: **\$44.99** One-Day & **FREE** Returns

Earn 5% **Back** on this purchase when you pay with your **Amazon Business Prime American Express Card**.

Eligible Prime membership required. Terms and cap apply.

May be available at a lower price from **other sellers**, potentially without free Prime shipping.

Style: **14 Megapixel**

**Recommended Uses For Product**

**Brand** Wildgame Innovations

**Model Name** Terra Extreme 14 Megapixel IR Trail Camera | Still Images and Video

**Connectivity Technology** Infrared

**Power Source** Battery Powered

### About this item

- Wildgame Innovations Trail Cameras Terra 14 Megapixel Trail Camera
- Terra Extreme Trail Camera – 14 Megapixel Game Camera in Trubark Camo | Video capabilities for gathering further intel on deer herd. IR Flash range and Detection Range out to 65 feet



# Bird Feeder: Supplemental Food and Census



Free Standard Shipping for Preferred Plus Neighbors on orders over \$29

[Learn More](#)

What can we help you find?

[Shop](#) [Tractor Supply App](#) [Gift Cards](#) [For Life Out Here](#) [Neighbor's Club](#) [Credit Center](#)

[Home](#) / [Pet](#) / [Backyard Birds & Critters](#) / [Wild Birds](#) / [Wild Bird Feeders & Accessories](#) / [Outdoor Bird Feeders](#) / [Royal Wing Plastic Tube Bird Feeder, 1.2 lb. Capacity](#)

## Royal Wing Plastic Tube Bird Feeder, 1.2 lb. Capacity



SKU: 125671799

[Reviews](#)

[Questions & Answers](#)

[Product Details](#)

[Specifications](#)



Click on image for larger fullscreen view.



**\$6.99**

As a Neighbor, you are eligible to earn 1 point per dollar on this purchase. [Join Now](#)

Free standard delivery to your local TSC store. Some exclusions apply..... [Learn More](#)



TSC Subscription available on a schedule that is convenient for you! [Learn More](#)



Order every 1 month

Entice the most desired and colorful birds with the Royal Wing Tube Bird Feeder. This tall feeder has multiple perches and feeding locations making it the perfect feeder for attracting a large variety of birds.

- Fill periodically with Black Oil Sunflower seed
- Tractor Supply \$32.99 for 40 pounds